

1978 Cal 39 MKII

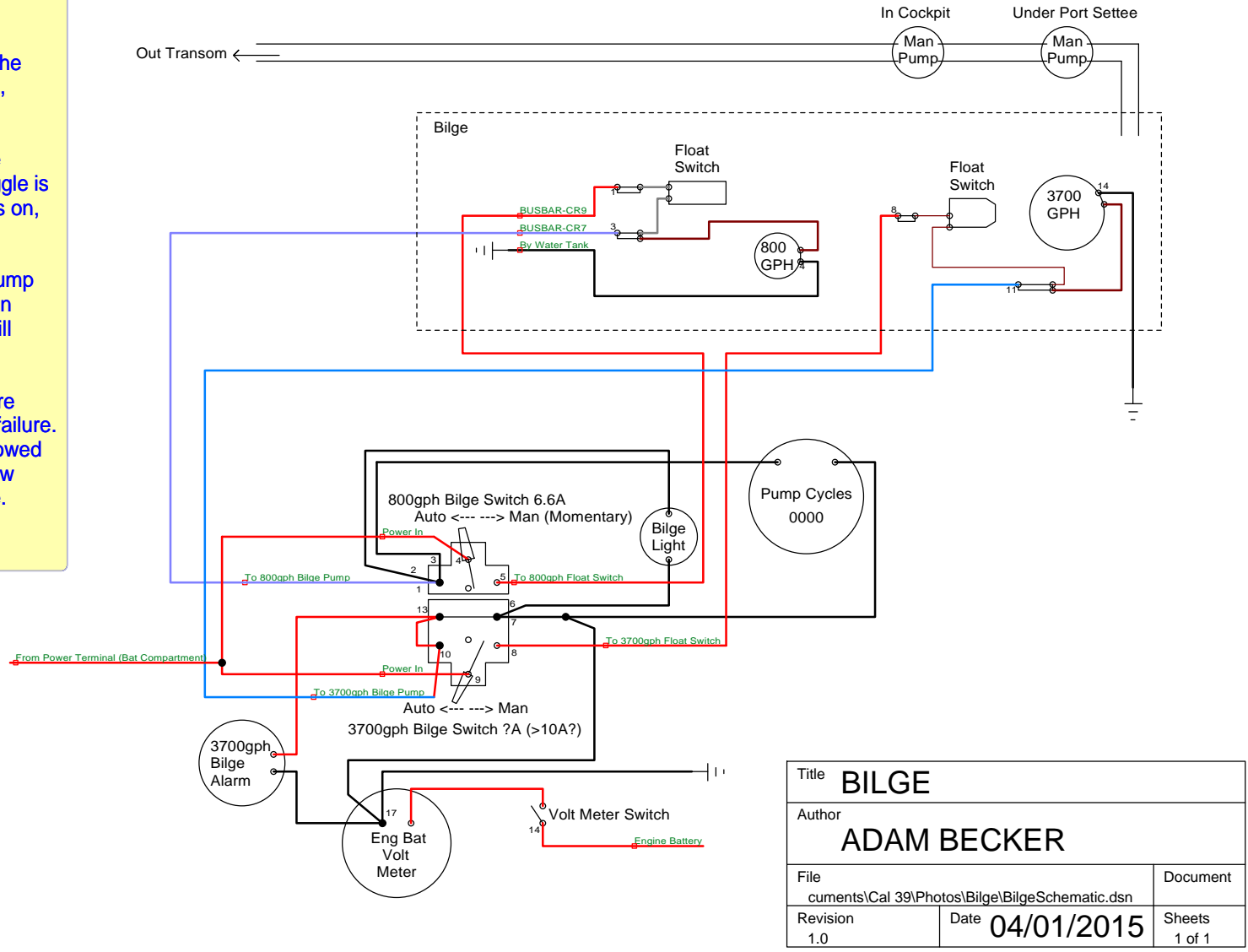
There are two bilge pumps. The normal pump is installed lower, rated at 800 gph. The larger 3700 gph pump is installed higher in case of massive flooding.

Toggle switches on the CB panel control the pumps. They can be selected to "Manual", "Auto", or "Off".

Automatic activation occurs whenever the respective float switch is lifted and the toggle is selected to "Auto". If either pump switches on, the bilge counter increases by one count.

In the event the water rises to the large pump and the pump's float switch is activated, an audible alarm will sound and a red light will illuminate on the CB panel.

Two manual whale pumps with handles are available in case of a complete electrical failure. There is also a portable 2 gallon pump stowed for random jobs. And finally, the engine raw water intake can be directed into the bilge.



Title BILGE	
Author ADAM BECKER	
File cuments\Cal 39\Photos\Bilge\BilgeSchematic.dsn	Document
Revision 1.0	Date 04/01/2015 Sheets 1 of 1